

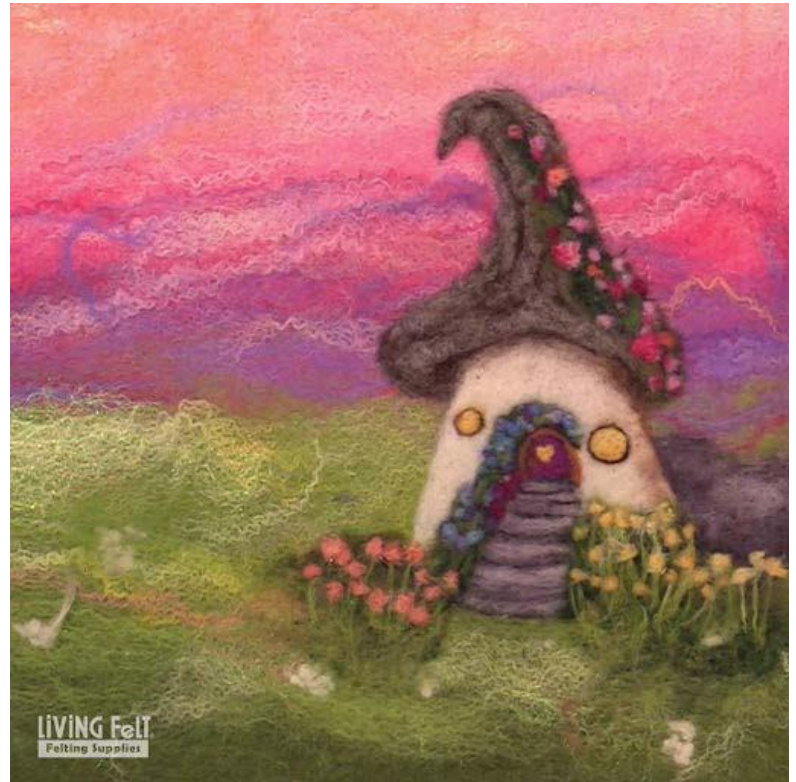
# Needle Felting a Mushroom Fairy House Onto a Wet Felted Blended Background

PAT230329

Previously, we carded a “Fairy Fantasy” Art Batt on our drum carder, and then wet felted the Art Batt into a beautifully blended canvas background.

In this tutorial, we are finishing this piece off by needle felting a sweet Fairy Mushroom House onto our handmade felt background.

Join Marie as she needle felts this 2D scene that has some 3D textural elements to it as well! Give your mushroom house a dimensional roof with bright flowers growing over it, a door with a recessed look and cobblestone steps leading up to it, and a garden to get lost in! Experiment with needle felting different wools and luster fibers to add perfect pops of color and texture to this playful scene!



See the Tutorial & Shop Supplies here:

<https://feltingsupplies.livingfelt.com/ww-nf-mushroom-house>

## Recommended Supplies Needed:

- Supplies & Tools:
  - Wool Battings such as **MC-1**, **Bergschaf**, or **Maori**.
  - For added sheen and silky appearance, consider a Decadence Blend or Merino Silk Blend.
  - WOW Felting Pad
  - 38 Star-Spiral Needle
  - 42 Triangle Needle
  - Single or Multi Needle Felting Tool (optional)

Shop @ [www.livingfelt.com](http://www.livingfelt.com)

©2023 All Rights Reserved by Living Felt, Inc. Reproduction in whole or in part in any language without written permission by Living Felt is prohibited. No one may copy, reprint or distribute any of this pattern for any purpose for commercial or educational use without written permission from Living Felt. You are free to sell anything you make from our tutorials, and kits.

**LiViNG Felt**<sup>®</sup>  
Felting Supplies  
Learn · Share · Teach · Create · Felt

Needle Felting a Mushroom Fairy House  
Onto a Wet Felted Blended Background

©2023, LIVING FELT

Toll Free: 1-877-665-5790

[www.LivingFelt.com](http://www.LivingFelt.com)

# Needle Felting a Mushroom Fairy House Onto a Handmade Wet Felted Background

PAT230301

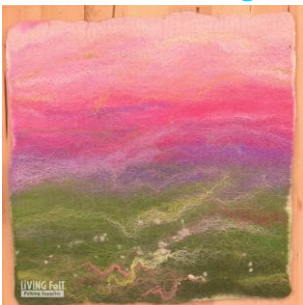
---

This sweet felted scene uses a combination of felting methods, and offers so much to learn! Check out the other video tutorial that were used in creating this sweet felted scene:

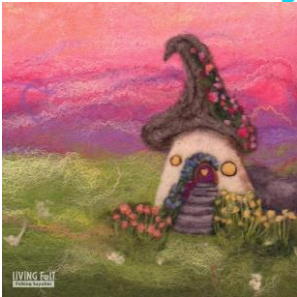
## Part 1: [Drum Carding a Fairy Fantasy Art Batt](#)



## Part 2: [Wet Felting a Fairy Fantasy Blended Canvas Background](#)



## Part 3: [Needle Felting a Mushroom Fairy House onto our Fairy Fantasy Background](#)



### Looking For More Tutorials?

Learn Home: <https://feltingsupplies.livingfelt.com/learn>

Our Online School: [www.feltingtutorials.com](http://www.feltingtutorials.com)

YouTube: [www.youtube.com/livingfelt](http://www.youtube.com/livingfelt)

### Hang with us!

Our group: [www.fb.com/groups/livingfeltfriends](http://www.fb.com/groups/livingfeltfriends)

Facebook: [www.fb.com/livingfelt](http://www.fb.com/livingfelt)

Instagram: [www.instagram.com/livingfelt](http://www.instagram.com/livingfelt)

©2023 All Rights Reserved by Living Felt, Inc. Reproduction in whole or in part in any language without written permission by Living Felt is prohibited. No one may copy, reprint or distribute any of this pattern for any purpose for commercial or educational use without written permission from Living Felt. You are free to sell anything you make from our tutorials, and kits.

**LiViNG FeLT**<sup>®</sup>  
Felting Supplies  
Learn · Share · Teach · Create · Felt

**Needle Felting a Mushroom Fairy House  
Onto a Wet Felted Blended Background**

©2023, LIVING FELT

Toll Free: 1-877-665-5790

[www.LivingFelt.com](http://www.LivingFelt.com)

